

**HAND1 Antibody (N-term)**  
**Purified Rabbit Polyclonal Antibody (Pab)**  
**Catalog # AP21275a****Specification**

---

**HAND1 Antibody (N-term) - Product Information**

Application	WB,E
Primary Accession	<a href="#">O96004</a>
Reactivity	Rat
Host	Rabbit
Clonality	polyclonal
Isotype	Rabbit IgG
Calculated MW	23627

**HAND1 Antibody (N-term) - Additional Information****Gene ID** 9421**Other Names**

Heart- and neural crest derivatives-expressed protein 1, Class A basic helix-loop-helix protein 27, bHLHa27, Extraembryonic tissues, heart, autonomic nervous system and neural crest derivatives-expressed protein 1, eHAND, HAND1, BHLHA27, EHAND

**Target/Specificity**

This HAND1 antibody is generated from a rabbit immunized with a KLH conjugated synthetic peptide between 83-116 amino acids from the N-terminal region of human HAND1.

**Dilution**

WB~~1:2000

E~~Use at an assay dependent concentration.

**Format**

Purified polyclonal antibody supplied in PBS with 0.09% (W/V) sodium azide. This antibody is purified through a protein A column, followed by peptide affinity purification.

**Storage**

Maintain refrigerated at 2-8°C for up to 2 weeks. For long term storage store at -20°C in small aliquots to prevent freeze-thaw cycles.

**Precautions**

HAND1 Antibody (N-term) is for research use only and not for use in diagnostic or therapeutic procedures.

**HAND1 Antibody (N-term) - Protein Information****Name** HAND1**Synonyms** BHLHA27, EHAND

**Function** Transcription factor that plays an essential role in both trophoblast giant cell differentiation and in cardiac morphogenesis (By similarity). Binds the DNA sequence 5'-NRTCTG-3' (non-canonical E-box) (By similarity). Acts as a transcriptional repressor of SOX15 (By similarity). In the adult, could be required for ongoing expression of cardiac-specific genes (PubMed:[9931445](#)).

#### Cellular Location

Nucleus, nucleoplasm. Nucleus, nucleolus. Note=Interaction with MDFIC sequesters it into the nucleolus, preventing the transcription factor activity Phosphorylation by PLK4 disrupts the interaction with MDFIC and releases it from the nucleolus, leading to transcription factor activity (By similarity).

#### Tissue Location

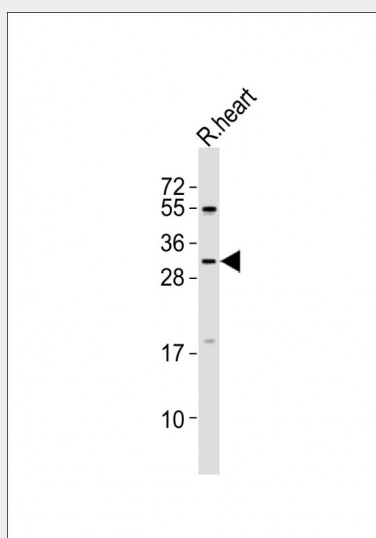
Heart.

### HAND1 Antibody (N-term) - Protocols

Provided below are standard protocols that you may find useful for product applications.

- [Western Blot](#)
- [Blocking Peptides](#)
- [Dot Blot](#)
- [Immunohistochemistry](#)
- [Immunofluorescence](#)
- [Immunoprecipitation](#)
- [Flow Cytometry](#)
- [Cell Culture](#)

### HAND1 Antibody (N-term) - Images



Anti-HAND1 Antibody (N-term) at 1:2000 dilution + rat heart lysates Lysates/proteins at 20 µg per lane. Secondary Goat Anti-Rabbit IgG, (H+L), Peroxidase conjugated at 1/10000 dilution Predicted band size : 24 kDa Blocking/Dilution buffer: 5% NFDM/TBST.

### HAND1 Antibody (N-term) - Background

Transcription factor that plays an essential role in both trophoblast-giant cells differentiation and

in cardiac morphogenesis. In the adult, could be required for ongoing expression of cardiac-specific genes. Binds the DNA sequence 5'- NRTCTG-3' (non-canonical E-box) (By similarity).

#### **HAND1 Antibody (N-term) - References**

Knoefler M., et al. Gene 224:77-86(1998).